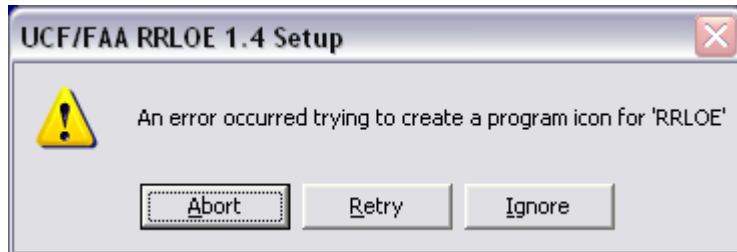


Workaround for RRLOE Error:

An error occurred trying to create a program icon for 'RRLOE'

Problem:

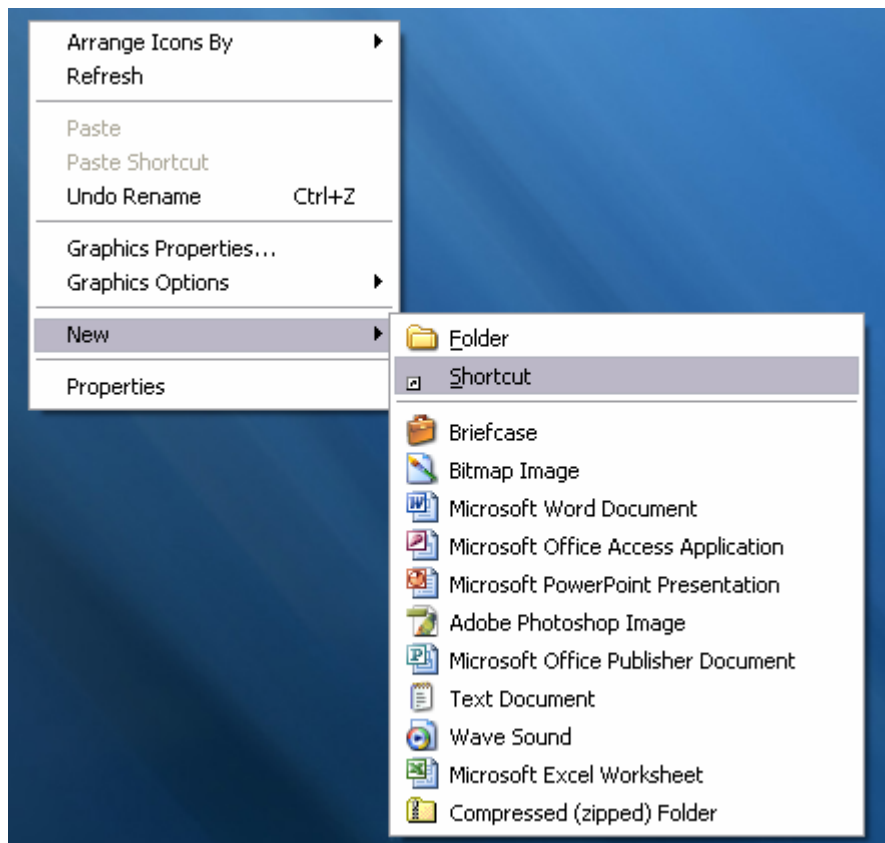
Attempting to install RRLOE produces the following error at the end of installation.



Solution:

An icon for this program will need to be created manually:

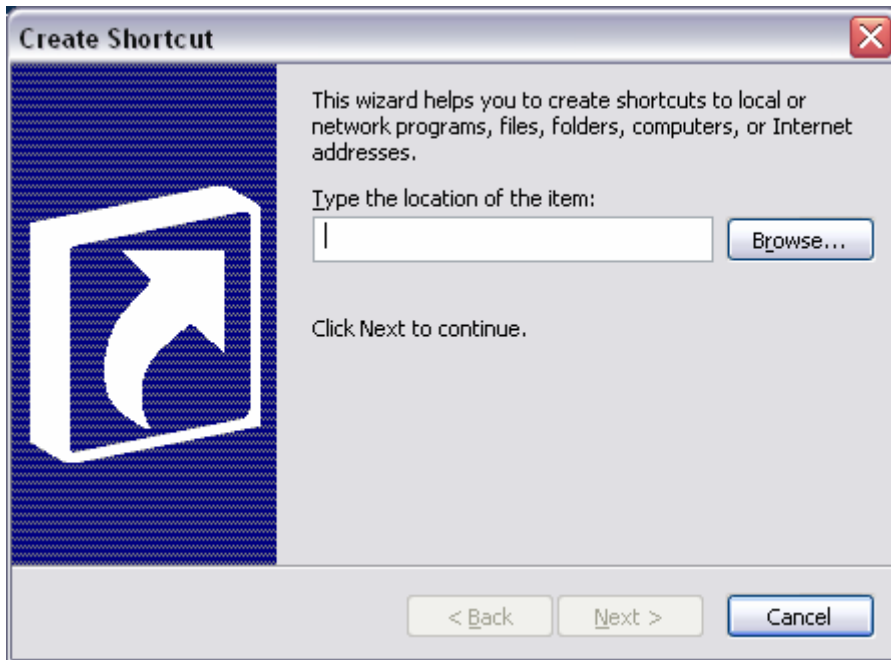
1. **Right click** on any empty space on the desktop
2. Select **New > Shortcut**



3. In the box titled "Type the location of the item" type the following including quotes:

"C:\Program Files\Microsoft Office\OFFICE11\MSACCESS.EXE" /wrkgrp "C:\Program Files\RRLOE\rrloe.mdw" "C:\Program Files\RRLOE\rrloe_xp.mde"

NOTE: OFFICE11 is used in this example, version numbers may vary by computer. Check under "c:\program files\microsoft office" to find the correct folder name.



4. Click **Next**

5. In the box titled "Type a name for this shortcut" type **RRLOE**

6. Click **Finish**

A screenshot containing the details of the completed shortcut is shown below:

